

Mastery Data:

Standardized Tests



AAPPL

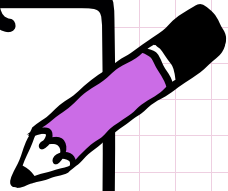
The **ACTFL Assessment of Performance toward Proficiency in Language (AAPPL)** is a performance-based assessment of standards-based language learning. The AAPPL is an online assessment that measures one's ability to engage in linguistic tasks on topics of personal, social, and academic relevance across the three modes of communication (Interpersonal, Interpretive, and Presentational) as defined by the World-Readiness Standards for Learning Languages.

This assessment will be given to 3rd (Spanish, French, and Mandarin), 5th, & 8th graders in their L2.

3rd,
5th, &
8th

CoGAT

The **Cognitive Abilities Test (CogAT)** is a multiple-choice assessment which measures reasoning skills with different types of verbal, quantitative, and nonverbal questions. ICSAtlanta administers the CogAT to all 3rd grade students.



3rd

STAMP

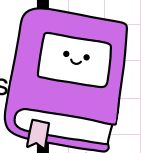
The **Avant Standards-Based Measurement of Proficiency (STAMP 4Se)** is used to measure second language proficiency. Results from the STAMP 4Se will yield detailed information on how students are progressing in their target language. Our 3rd-grade German students are assessed in two domains (listening and speaking). Avant STAMP 4Se is web-based and computer-adaptive. This means that the testing engine automatically adapts to each student's level (up or down) as the assessment progresses. The STAMP 4Se provides real-world questions on level-appropriate topics. These questions engage learners, and because STAMP 4Se is adaptive, students are able to demonstrate their personal proficiency level without any pre-set upper limits.

3rd
German

Milestones

ICSAtlanta administers the Milestones in late spring. The Georgia Milestones Assessment System is a single assessment system that consists of end-of-grade measures in English language arts and mathematics in grades 3-8, end-of-grade measures in science in grades 5 and 8, end-of-grade measure in social studies in grade 8, and end-of-course measures for specified high school courses. Georgia Milestones measures how well students have learned the knowledge and skills outlined in the state-adopted content standards

[Parent Resources for Milestones Prep](#)



3rd-
8th

Schoolwide Data: Renaissance



STAR Early Literacy

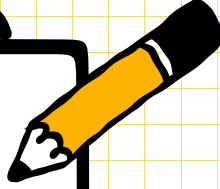
ICSAntlanta administers the **STAR Early Literacy** assessment to kindergarten students (and first grade students who have a demonstrated need). Results are used to gauge student levels of understanding in print concepts, phonological awareness, phonics & word recognition, fluency, vocabulary acquisition & use, counting & cardinality, operations & algebraic thinking, and measurement & data.

Kind-1st

[Star Assessments Family Resource Page](#)



STAR Math



ICSAntlanta utilizes the **STAR Math** Enterprise assessment as our benchmarking tool, three times each school year, for students in grades 1st-8th. Results are used to gauge levels of understanding in numbers & operations, algebra, geometry & measurement, data analysis, statistics, and probability. This assessment is also used to predict student performance on state standards and assessments.

1st-8th

[Star Assessments Family Resource Page](#)

STAR Reading

ICSAntlanta utilizes the **STAR Reading** Enterprise assessment as our benchmarking tool, three times each school year, for students in grades 1st-8th. Results are used to gauge levels of understanding in vocabulary, comprehension, literacy, author, and argument. This assessment is also used to predict student performance on state standards and assessments.

1st-8th

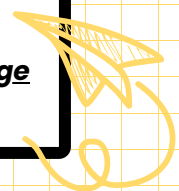
[Star Assessments Family Resource Page](#)

STAR CBM

ICSAntlanta administers the **STAR Reading CBM** assessments to students in grades Knd-3rd for ongoing data tracking and to meet the screening requirements of SB 48. STAR Reading CBM are short assessments used to detect/recognize possible deficits in reading.

Kind-3rd

[Star Assessments Family Resource Page](#)



Classroom Data:

Kind-3rd ongoing tracking ✨



Kindergarten

Kindergarten teachers track 4 rounds of student-level, classroom data each school year in the following areas:

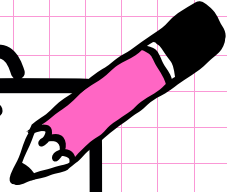
- Letter Names and Sounds
- Sight Words
- Writing Numbers
- Beginning Numeracy
- Conceptual Addition



1st Grade

First grade teachers track 4 rounds of student-level, classroom data each school year in the following areas:

- Letter Sounds
- Expressive Nonsense Words
- Passage Oral Reading/Fluency
- Sight Words
- Writing Numbers
- Conceptual Addition
- Addition and Subtraction Fluency 0-9



2nd Grade

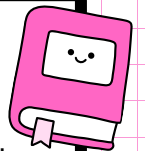
Second grade teachers track 4 rounds of student-level, classroom data each school year in the following areas:

- Expressive Nonsense Words
- Passage Oral Reading/Fluency
- Sight Words
- Addition and Subtraction Fluency 0-20

3rd Grade

Third grade teachers track 4 rounds of student-level, classroom data each school year in the following areas:

- Expressive Nonsense Words
- Passage Oral Reading/Fluency
- Sight Words
- Writing Numbers
- Conceptual Addition
- Addition and Subtraction Fluency 0-20
- Multiplication Fluency 0-12



Classroom Data: 4th & 5th ongoing tracking ✨



4th Grade

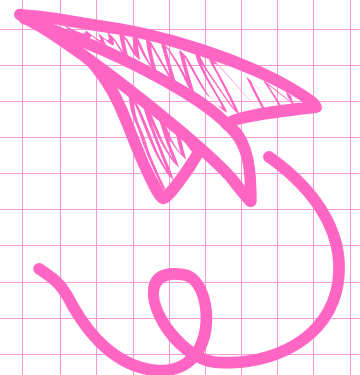
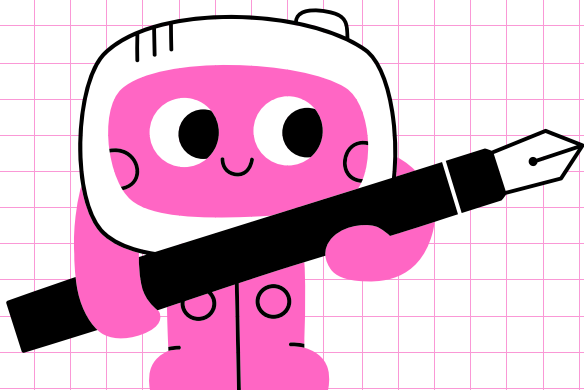
Fourth grade teachers track 4 rounds of student-level, classroom data each school year in the following areas:

- Reading Fluency
- Reading Comprehension
- Addition and Subtraction Fluency 0-20
- Multiplication Fluency 0-12
- Division Fluency 0-12

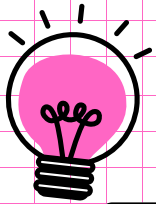
5th Grade

Fifth grade teachers track 4 rounds of student-level, classroom data each school year in the following areas:

- Reading Fluency
- Reading Comprehension
- Addition and Subtraction Fluency 0-20
- Multiplication Fluency 0-12
- Division Fluency 0-12



Classroom Data: Developmental Reading Assessment (DRA)



Description

The **Developmental Reading Assessment (DRA)** is an individually administered assessment of a child's reading capabilities. It is a tool used by instructors to identify a student's reading level, accuracy, fluency, and comprehension. ICSAtlanta students are assessed at least once per year with the DRA.

You can read more about the DRA as well as find books for your child based on his/her reading level [HERE](#).

Kind-
5th

Results

After the test is evaluated and scored, each student is assigned a numeric (alphanumeric for very early readers) DRA level (A1 through 80). Children with stronger reading abilities yield higher numbers.

Important!

How do DRA levels compare to Lexile, Fountas & Pinnell, and other programs/measurements? [CLICK HERE](#) to see a correlation chart!

